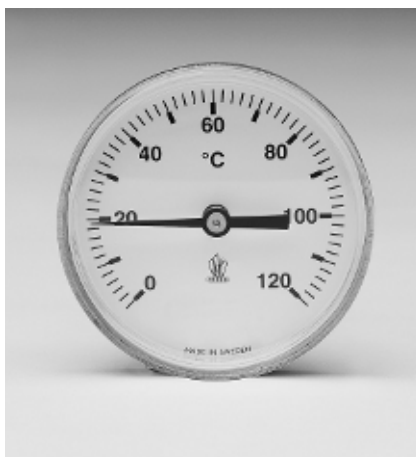


Bimetal thermometer

Heating types



REXOTHERM



RX-981 B

RX-1202 D

RX-1202



RX-1203

Temperature ranges

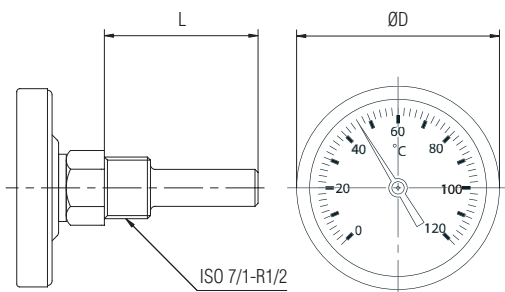
- 40+ 40°C
- 20+ 60°C
- 0+ 60°C
- 0+ 100°C
- 0+ 120°C
- 0+ 160°C
- 0+ 200°C



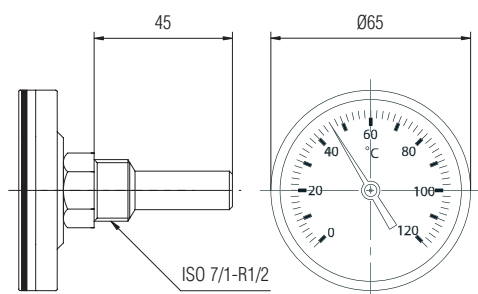


Technical Data

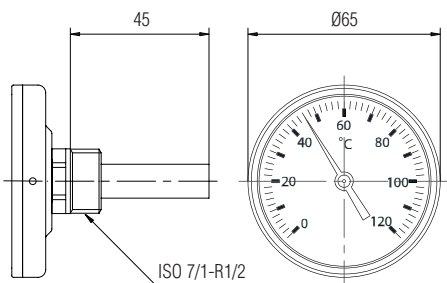
RX 1202, 1203, 1202 D, 981 B



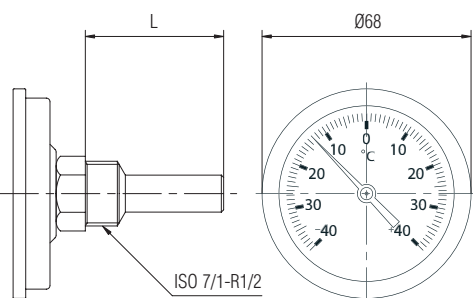
RX-1202



RX-1203



RX-1202 D



RX-981 B

Dimensions

See table below

Design

Thermometer in standard design with back stem entry, complete with thermowell of brass

Casing /Bezel

Type 1202 Zincified steel
 Type 1203 Heat resistant composite material
 Type 981 B Stainless steel, sealed design

Measuring System

Bimetal

Max. Working Temperature

Full scale value at continuous operation
 10% over-load capacity for temporary operation only

Degree of protection

Type 1202 IP50
 Type 1203 IP50
 Type 981 B IP65

Mounting

Back stem entry

Immersion Length

Type 1202D, L-45 mm
 Type 1203 L-45 mm
 Type 1202 See table below
 Type 981B See table below

Working pressure

PN25

Thermowell

Available in dezincified brass or stainless steel on request
 Male threading G 1/2" or G 3/4"

Type	ØD (mm)	L (mm)				
		50	63	100	150	200
RX 1202	66/83/100					
RX 981 B	68					

